



Spring Newsletter

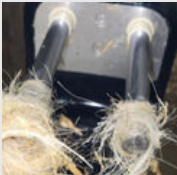
In our efforts to reach out to all of our valued customers, we have decided to launch our seasonal newsletter. You can expect this newsletter four times a year to stay up to date on trends in the industry.

Our goal is to make this newsletter an insightful resource packed with valuable information about our products, services, and industry updates.

Thank you for being a part of the Western Ag Systems community!

[**Subscribe Now**](#)

In This Issue



Spring Tips

[**Click Here**](#)



Upgrades/Updates 1

[**Click Here**](#)



Upgrades/Updates 2

[**Click Here**](#)

CONTACT US



Saskatoon 306.382.0700
Swift Current 306.773.7999



[**westernagsystems.com**](http://westernagsystems.com)



Spring: Tips and Tricks

Key steps to reduce failures and connection issues:

- Perform daily cleaning of the laser (use the designated cleaning solution), 3D camera, ID reader, and photocell.
- Ensure the laser cover is tight and square, followed by teat cup calibration.
- Check ropes are the proper length and not swollen.
- A laminated checklist with more maintenance tasks is available from our Service Department.



Common issues found in the field:

- Daily monitoring of robot indications is crucial for maintaining milk quality.
- An alert titled **"Cleaning Not OKE"** indicates that a specific quarter has not been properly cleaned. The alert identifies the affected quarter, and in some cases, the issue has been traced to a disconnected jetter hose or poor alignment with the jetters.
- During visits, we have observed low or non-functioning brush disinfectant systems. This is a significant contributor to potential bacterial buildup and milk quality issues. Test weekly using pH strips to monitor and ensure proper disinfectant concentration.
- If you notice buildup on the brush motor, it's a strong indicator that the brush disinfectant hasn't been functioning properly for some time.
- Reduce brush motor failures by removing any excess hair (full motors no longer carry warranty only affected failed part of the unit).



Learn More



[Rodent Prevention](#)

Upgrades/Updates

Tip #1: Cows sometimes try to jump into the feed bin, especially during their first milking:

- An optional bracket is available to prevent this.
- No robot modifications are required, part nr 5.1005.5436.0 for Right Hand, 5.1105.5436.0 for Left Hand.
- Bracket suitable for Robots serial nr 0003166452 and higher.



Tip #2: Protection Plate Type 2 for MQC -2 Housing and M12 Connectors A5:

- The fixation of the plate is more robust.
- A rubber flap has been added (Figure 2, black section), which will reduce the risk of unwanted forces generated on the M12 connectors 5.1005.5847.0 – part nr.



Tip #3: Renewed directional protection plate for shut-off valve block type-2 and type-3:

- The protection plate (5.1005.5570.0), introduced in July 2022, above the shut-off valve block to protect it from water had a ridge which caused water to run to both sides.
- The renewed protection plate has a diagonal ridge, causing the water to run away from the shut-off valve block. There is now a right-handed version (5.1005.5570.0, the same part number as the old part as it is revised) and a left-handed version (5.1105.5570.0).



Tip #4: Vector software 3.3 is available – see below for a few improvements, contact service for your next update:

- Updated AM35 operating system.
- Enhanced dosing behaviour.
- Reduced empty feed grabber grabs.
- Clean Auger Mode.
- No double feed results reporting to Horizon.
- Solving “No mains power during feed loading”, “Dosing roller blocked” in combination with trip codes SLF1.



New MFR for the Vector System

Lely has released a new MFR for the Vector System. Official delivery is scheduled for week 18 of 2025.



[New MFR Video](#)

Introducing the Darrel K Penner Scholarship ***(formerly the AgriHub Agricultural Scholarship)***

Introduced in 2021, our goal for the scholarship program is to foster the love of careers within agriculture, ensure that post-secondary education is attainable and affordable, and finally, to support our farming partners family members who wish to pursue Agriculture as their career path.

Two scholarships available, \$1,250 each.

DARREL K PENNER SCHOLARSHIP

How To Apply

Visit our website (or scan/click the QR code) and complete the form by June 30, 2025. Be sure to have your acceptance letter/admissions letter available to upload.



Requirements

- Enrolled in a program for the 25/26 academic year
- Provide proof on acceptance
- Outline your community involvement
- Share your agriculture career goals
- Insight into your background in Agriculture

[Click Here To Apply](#)